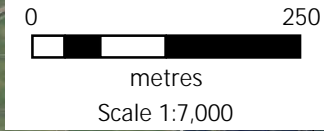
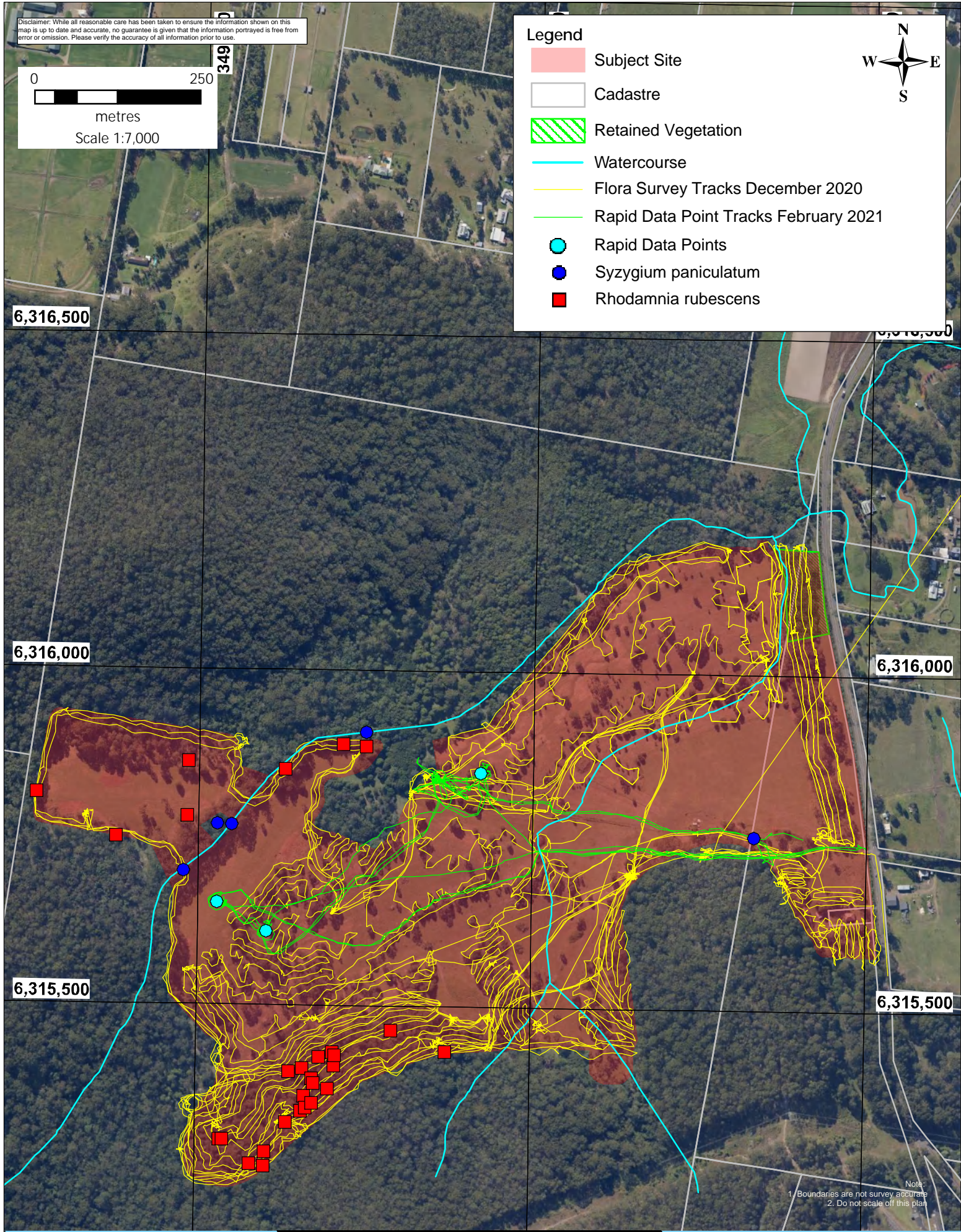
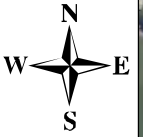


Disclaimer: While all reasonable care has been taken to ensure the information shown on this map is up to date and accurate, no guarantee is given that the information portrayed is free from error or omission. Please verify the accuracy of all information prior to use.



### Legend

- Subject Site
- Cadastre
- Retained Vegetation
- Watercourse
- Flora Survey Tracks December 2020
- Rapid Data Point Tracks February 2021
- Rapid Data Points
- Syzygium paniculatum
- Rhodamnia rubescens



Note:  
1. Boundaries are not survey accurate  
2. Do not scale off this plan



# AEP

Title: Figure 6 - Flora Survey Effort and Threatened Flora Records

Location: 414 Old Maitland Road, Mardi, NSW

Client: Transnational Pastoral Pty Ltd and The Stevens Group

Date: May 21

BOAMS Ref: 14548

AEP Ref: 1910.02