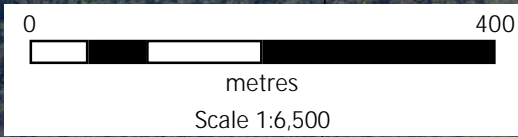
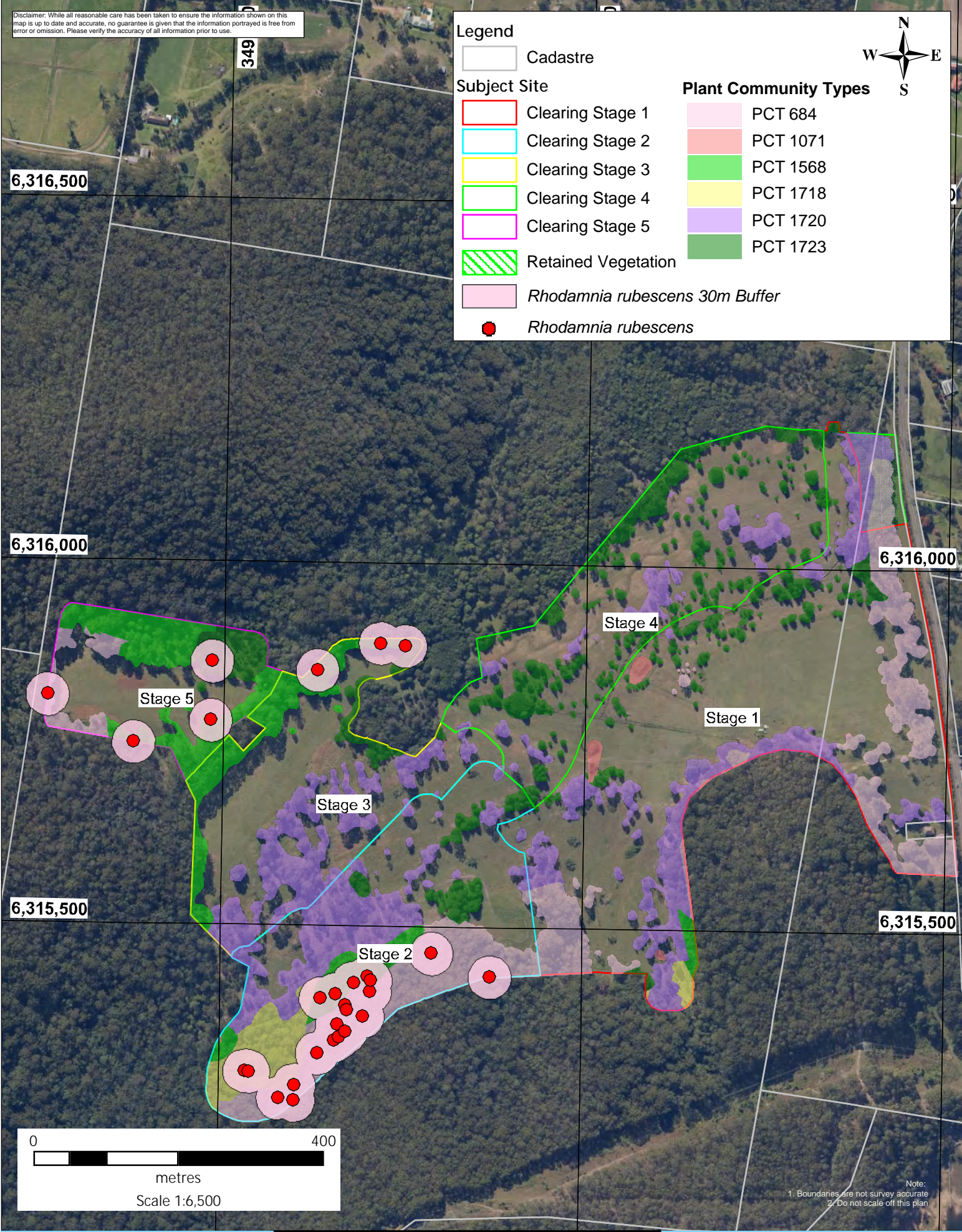
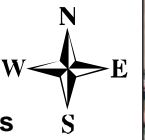


Disclaimer: While all reasonable care has been taken to ensure the information shown on this map is up to date and accurate, no guarantee is given that the information portrayed is free from error or omission. Please verify the accuracy of all information prior to use.

Legend

- | | | | |
|--|---------------------------------------|--|----------|
| | Cadastre | | PCT 684 |
| | Clearing Stage 1 | | PCT 1071 |
| | Clearing Stage 2 | | PCT 1568 |
| | Clearing Stage 3 | | PCT 1718 |
| | Clearing Stage 4 | | PCT 1720 |
| | Clearing Stage 5 | | PCT 1723 |
| | Retained Vegetation | | |
| | <i>Rhodamnia rubescens</i> 30m Buffer | | |
| | <i>Rhodamnia rubescens</i> | | |



Note:
 1. Boundaries are not survey accurate
 2. Do not scale off this plan



Title: Figure 13 - *Rhodamnia rubescens* Species Date: May 21
 Count and 30 m Buffers
 Location: 414 Old Maitland Road, Mardi, NSW BOAMS Ref: 14548
 Client: Transnational Pastoral Pty Ltd and AEP Ref: 1910.02
 The Stevens Group