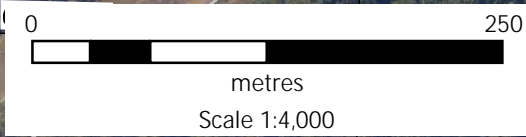
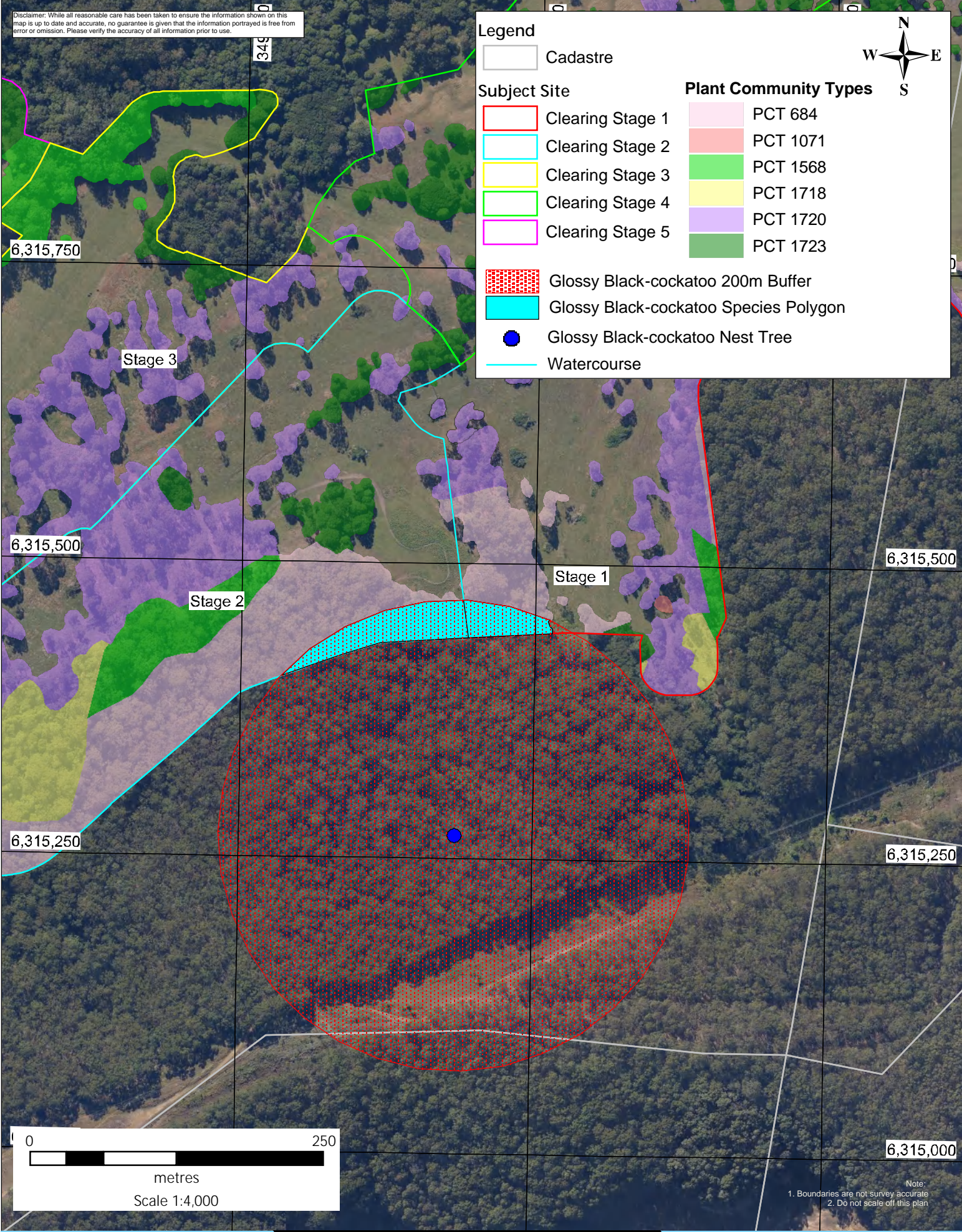


Disclaimer: While all reasonable care has been taken to ensure the information shown on this map is up to date and accurate, no guarantee is given that the information portrayed is free from error or omission. Please verify the accuracy of all information prior to use.

Legend

- Cadastre
- Subject Site**
 - Clearing Stage 1
 - Clearing Stage 2
 - Clearing Stage 3
 - Clearing Stage 4
 - Clearing Stage 5
- Plant Community Types**
 - PCT 684
 - PCT 1071
 - PCT 1568
 - PCT 1718
 - PCT 1720
 - PCT 1723
- Glossy Black-cockatoo 200m Buffer
- Glossy Black-cockatoo Species Polygon
- Glossy Black-cockatoo Nest Tree
- Watercourse



Note:
1. Boundaries are not survey accurate
2. Do not scale off this plan



Title: Figure 10 - Glossy Black-cockatoo Species Polygon Date: May 21
Location: 414 Old Maitland Road, Mardi, NSW BOAMS Ref: 14548
Client: Transnational Pastoral Pty Ltd and The Stevens Group AEP Ref: 1910.02