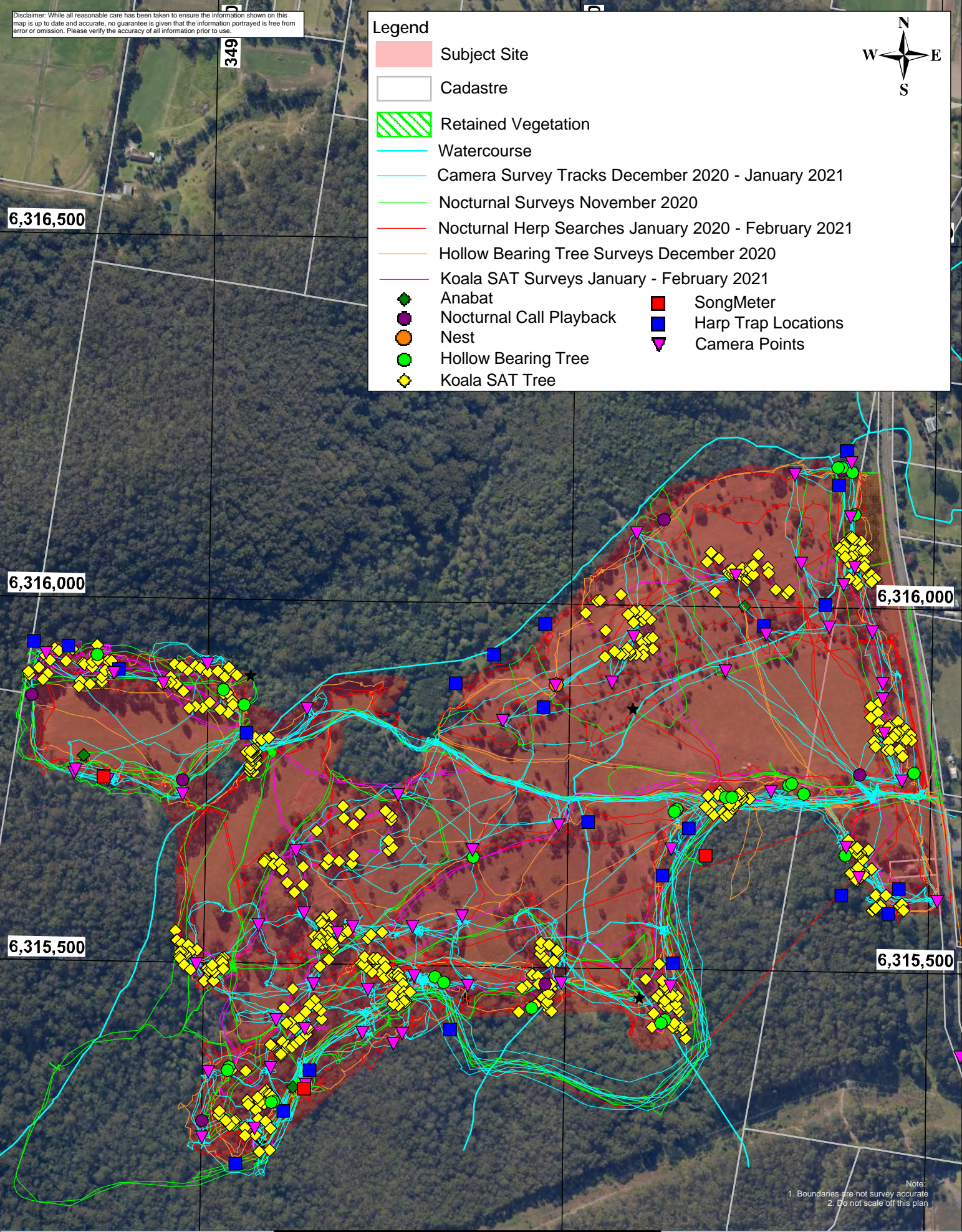


Disclaimer: While all reasonable care has been taken to ensure the information shown on this map is up to date and accurate, no guarantee is given that the information portrayed is free from error or omission. Please verify the accuracy of all information prior to use.

Legend

-  Subject Site
-  Cadastre
-  Retained Vegetation
-  Watercourse
-  Camera Survey Tracks December 2020 - January 2021
-  Nocturnal Surveys November 2020
-  Nocturnal Herp Searches January 2020 - February 2021
-  Hollow Bearing Tree Surveys December 2020
-  Koala SAT Surveys January - February 2021
-  Anabat
-  Nocturnal Call Playback
-  Nest
-  Hollow Bearing Tree
-  Koala SAT Tree
-  SongMeter
-  Harp Trap Locations
-  Camera Points



Note:
1. Boundaries are not survey accurate
2. Do not scale off this plan



Title: Figure 7 - Fauna Survey Effort

Date: May 21

Location: 414 Old Maitland Road, Mardi, NSW

BOAMS Ref: 14548

Client: Transnational Pastoral Pty Ltd and The Stevens Group

AEP Ref: 1910.02