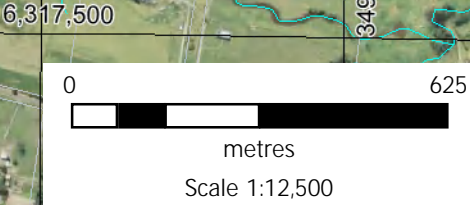


Disclaimer: While all reasonable care has been taken to ensure the information shown on this map is up to date and accurate, no guarantee is given that the information portrayed is free from error or omission. Please verify the accuracy of all information prior to use.



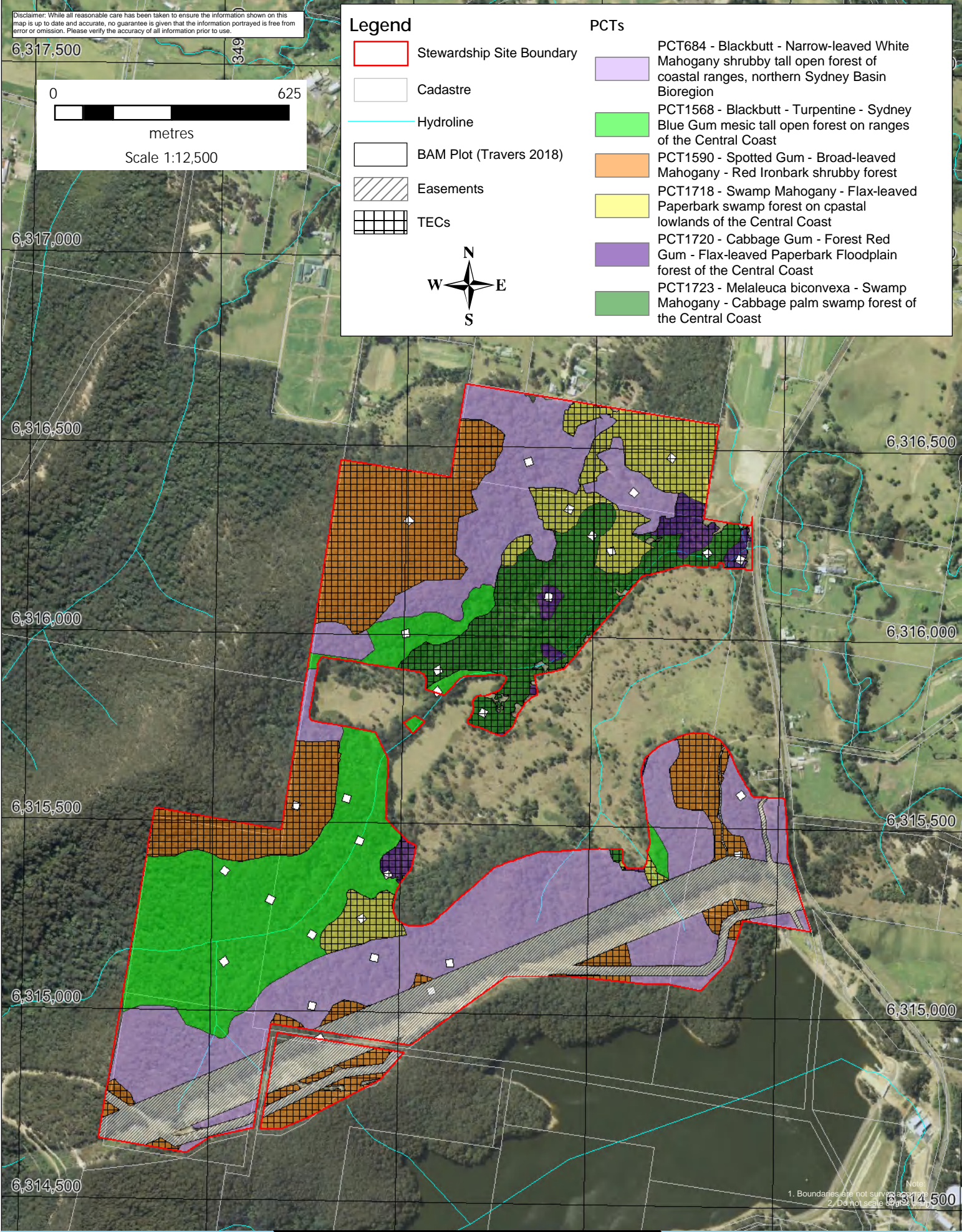
Legend

- Stewardship Site Boundary
- Cadastre
- Hydroline
- BAM Plot (Travers 2018)
- Easements
- TECs



PCTs

- PCT684 - Blackbutt - Narrow-leaved White Mahogany shrubby tall open forest of coastal ranges, northern Sydney Basin Bioregion
- PCT1568 - Blackbutt - Turpentine - Sydney Blue Gum mesic tall open forest on ranges of the Central Coast
- PCT1590 - Spotted Gum - Broad-leaved Mahogany - Red Ironbark shrubby forest
- PCT1718 - Swamp Mahogany - Flax-leaved Paperbark swamp forest on coastal lowlands of the Central Coast
- PCT1720 - Cabbage Gum - Forest Red Gum - Flax-leaved Paperbark Floodplain forest of the Central Coast
- PCT1723 - Melaleuca biconvexa - Swamp Mahogany - Cabbage palm swamp forest of the Central Coast



Note:
1. Boundaries are not surveyed
2. Do not scale



Title: Figure 4 - PCTs and BAM Plot Locations
 Location: Old Maitland Road, Mardi
 Client: Transnational Pastoral Pty Ltd and The Stevens Group
 Date: May 2021
 BOAMS Ref: 14546
 AEP Ref: 1910.06